

ACCESSORIES

COMPATIBLE MODELS:

- Apex Tablets
- Bioptix Biometric Tablets
- Biosense Biometric Tablets



DETACHABLE KEYBOARD



Part No: RDK501

- Rugged, detachable, secure on-the-go keyboard
- Foldable Keyboard like a laptop
- Offers different layouts for different languages
- **Dimensions** : 10.94 x 9.58 x 1.80 in (277.88 x 243.33 x 45.72 mm)
- **Weight** : 2.09 lbs (0.95kg)



DESKTOP DOCK



- Wide array of connectivity options
- Shares the same power adapter with Tablet
- **Dimensions** : 7.1 x 5.9 x 3.0 in (180.4 x 150.7 x 76.6 mm)
- **Weight** : 3.09 lbs (1.4 kg)

Part No: DT04 | DT06
(see SKU for details)

APEX		BIOSENSE	BIOPTIX	BIOPTIX	SKU	Kensington Lock	USB 3.1	USB 2.0	RJ45	HDMI	VGA	DC-In
PA5 (Android)	PM5 (Windows)	PX5C (Windows)	PA5B (Android)	PMSB (Windows)		PX5 (Windows)						
	✓			✓	DT04-F	x1	N/A	x4	x1	x1	x1	x1
✓	✓		✓	✓	DT04-S	x1	N/A	x4	N/A	N/A	N/A	x1
		✓			DT06-F	x1	x2	x2	x1	x1	x1	x1

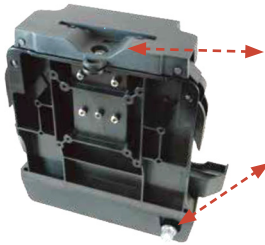


VEHICLE DOCK

- IP54 water/ dust resistant
- Vibration resistant - MIL-STD-810G, Method 514.6 Category 4, Fig 514.6C-1
- Shock resistant - MIL-STD-810G - Method 516.6, Procedure I, Functional Shock - Method 516.6, Procedure V, Crash Hazard Shock
- Wide array of connectivity options
- Flexible antenna pass-through setting via GUI
- Supports ignition (VD04-F)
- 75mm/ 100mm VESA bracket screw holes
- **Power :**
9 to 32VDC input, 19VDC 1.57A output
- **Dimensions :**
11.9 x 11.4 x 5 in (301.2 x 289.8 x 125.8 mm)
- **Weight :**
VD06-F/VD04-F 3.75 lbs (1.7 kg);
VD06-S/VD04-S 3.09 lbs (1.4 kg);



Part No: VD04 | VD06
(see SKU for details)



- Lock with pairing key
- D-ring design for adding 2nd lock
- Fuse for over current protection
- Easy swap fuse design



Flexible antenna pass-through setting

Choose either 2 of the following function through GUI.

EXT. 1 WIFI WWAN

EXT. 2 WIFI GPS

APEX		BIOSENSE	BIOPTIX	BIOPTIX	SKU	USB 3.1	USB 2.0	RS-232	RJ45	HDMI	VGA	AUDIO JACK	SPEAKER	SMA ANTENNA CONNECTOR	DI/DO	DC-In
PA5 (Android)	PMS (Windows)	PXSC (Windows)	PA5B (Android)	PMSB (Windows)		PX5 (Windows)										
	✓			✓	VD04-F	N/A	x4	x2	x1	x1	x1	x1	x1	x2	4/4	x1
✓	✓		✓	✓	VD04-S	N/A	x2	N/A	N/A	N/A	N/A	N/A	N/A	x2	N/A	x1
		✓			VD06-F	x2	x2	x2	x1	x1	x1	x1	x2	x1	4/4	x1
		✓			VD06-S	x2	N/A	N/A	N/A	N/A	N/A	N/A	N/A	x2	N/A	x1



BATTERIES & BATTERY CHARGER

10.8V, 4500mAh
(48.6Wh)



STANDARD BATTERY

10.8V, 9000mAh
(97.2Wh)



LONG LIFE BATTERY PACK

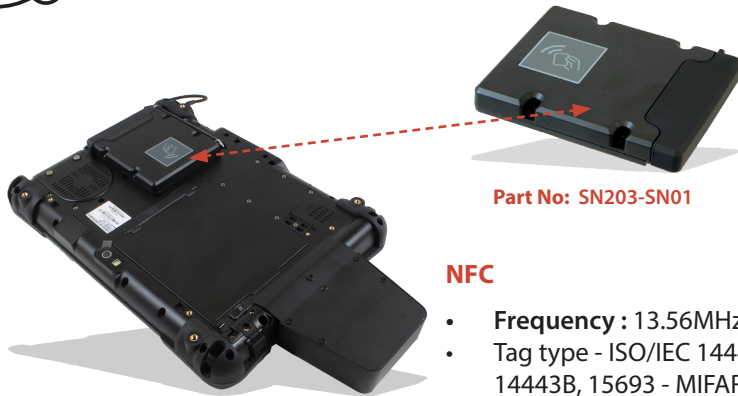


DUAL-BAY BATTERY CHARGER
Part No: EB200

- Dual bay design - Each bay can support both standard and extended batteries
- Clear LED indicators, power & charging status
- Shares the same power adapter with Tablet
- **Dimensions :** 6.1 x 4.2 x 3.1 in (153.7 x 106.4 x 80 mm)
- **Weight :** 1.32 lbs (0.6 kg)



NFC + SMART CARD READER



Part No: SN203-SN01

NFC

- Frequency : 13.56MHz
- Tag type - ISO/IEC 14443A, 14443B, 15693 - MIFARE 1K/4K, Ultralight - NFC-IP2 protocol

Smart Card Reader

- ISO7816 compliant
- EMV2000 (EMV 4.1) compatible
- Support PC/SC1.0 & PC/SC2.0
- Cards
 - Atmel : AT88sc1608, AT88sc153
 - Atmel : AT24c128, AT24c256
 - ST : M14C16, M14C04
 - Siemens 2-wire link
- protocol: sle4432/42
- Siemens serial 3-wire bus : sle4418/28



POWER ADAPTERS



AC ADAPTER

Input : AC100~240V, 50~60Hz; 19VDC, 3.42A, 65W



VEHICLE ADAPTER

Part No: VC01

Input : 10 - 32V, 11A Max
Output : 18.5V (18.5V), 4.9A 90W



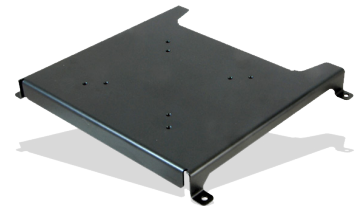
OTHER OPTIONS



HARD HANDLE



SHOULDER STRAP



VESA BRACKET



HANDLE



HAND STRAP



IP54 PEN